



# Focal Point

## HIGH-VISIBILITY PROJECT GETS A HIGH-PERFORMANCE ROOF

BY KRISTA HOVIS

**ZELMA GEORGE RECREATION CENTER** is a focal point in the residential Cleveland neighborhood where it is located. It houses a basketball court, roller rink, exercise areas and a running track. Surrounding the building are trees, baseball fields and an outdoor track. The center has a park-like atmosphere and constantly is being utilized by the families in the area.

Because it is such a highly used facility, it is important the building perform properly, as well as be aesthetically pleasing. After 10 years, the building still looked good, but some issues had arisen. The original metal roof was not watertight and had leakage problems. The panel profile used was not adequate for this type of application. The city needed to find a solution.



SHEFFIELD METALS INTERNATIONAL



“QUITE FRANKLY, DUE TO THE SIZE OF THE SHEETS, I DON'T THINK YOU COULD HAVE DONE IT ANY OTHER WAY; PARTICULARLY THE RADIUSSED ONES. SO I THINK THAT WAS A HUGE ADVANTAGE. I DON'T KNOW HOW YOU COULD HAVE DONE THIS USING FACTORY-ROLLED PANELS WITHOUT HAVING SOME SPLICES IN IT.”

—TIM LANE, PRESIDENT, COMMERCIAL SIDING

### LET IT ROLLFORM

Commercial Siding, Painesville, Ohio, has been involved with metal roofing and siding projects since 1960. It has undertaken reroofing projects nationally for 25 years and also has years of experience doing flat-to-slope conversions and metal-over-metal overlay systems over existing roofing. The company has done millions of square feet of projects for the military and government.

In addition to installing metal panels, Commercial Siding rollforms its own standing seam panels using on-site rollformers. The contractor belongs to the 15-member, East Baton Rouge, La.-based Ultra Seam Association Inc. The members get tests from Camas, Wash.-based Underwriters Laboratories and West Conshohocken, Pa.-based ASTM International and market their panels as a group. Making and installing its own panels helped allow Commercial Siding to come in with a bid 30 percent lower than its competitors for the Zelma George project.

Although the roof was leaking and needed to be fixed as quickly as possible, the city of Cleveland's engineers and the team as a

# S-5!™

The Right Way!

The Original

# COLORGARD®

**Unsurpassed holding strength – Perfect color-match – Easy to install – Inexpensive!**

ColorGard® is simply the best choice for snow retention. Unlike other options that inevitably fail—leaving behind damaged panelling—ColorGard® costs less, lasts longer, installs quicker, looks better, and prevents damage to the roofs.



Consult with your distributor or use our online calculator at [www.S-5.com](http://www.S-5.com) to help quickly and easily plan each job. The calculator will help you to tailor the ColorGard® system on a project-specific basis, allowing for all the variables involved—and even provides a printout of the calculations and a material requirement list.

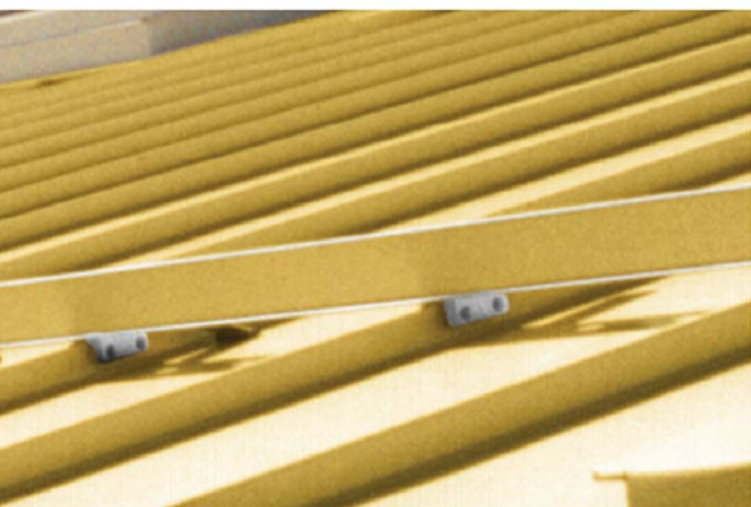
Don't be fooled into thinking that the product that *looks* the cheapest is the best deal. Do it right the first time, with S-5! It's the right way!

whole knew it would be best not to start the project during a rough Midwest winter. The project waited until spring 2008. “[The engineers agreed] with our opinion, which was that we can do this job during the winter and all be unhappy or we can wait and let Mother Nature calm down a little bit so we can do a good job,” says Tim Lane, Commercial Siding’s president, who has been with the company for 34 years. “They were patient enough to [wait].”

### MAKING PANELS

The building has an interesting configuration with an elliptical barrel roof in the center and straight roof slopes coming off the two sides. There is more than 50,000 square feet (4645 m<sup>2</sup>) of roofing area, so the team felt the best solution was to form the roof panels on-site. Commercial Siding used 24-gauge Galvalume-coated steel coil with a white PVDF finish.

The metal was formed into 16-inch- (406-mm-) wide standing seam roof panels. A rollformer was used for panel fabrication and the panels were curved on site as well.



## S-5!™ Snow Retention Systems



ColorGard®



SnoRail™



SnoFence™



RamGard™

Call Now For Pricing and Consultation!

# DYNAMIC FASTENER

*Everything for the Builder & Contractor*

**Kansas City, MO**  
(800) 821-5448

**Chicago, IL**  
(800) 573-7787

**Houston, TX**  
(800) 988-5490

**Las Vegas, NV**  
(866) 936-8665

**Memphis, TN**  
(800) 727-0288

**St. Louis, MO**  
(800) 444-0515

**St. Paul, MN**  
(800) 755-2426

circle no. 20 or <http://metalmag.hotims.com>

**[www.DynamicFastener.com](http://www.DynamicFastener.com)**

See S-5!™ at CONSTRUCT2009 Booth 4757  
**[www.S-5.com](http://www.S-5.com)**

Some of the radiussed panels were up to 60 feet (18 m) in length with an arch of 10 to 12 feet (3 to 3.7 m). Lane felt forming the panels on site was the key to having a quality product. "Quite frankly, due to the size of the sheets, I don't think you could have done it any other way; particularly the radiussed ones," he comments. "So I think that was a huge advantage. I don't know how you could have done this using factory-rolled panels without having some splices in it."

Although the panels weren't heavy, their size made it difficult to get them to the roof surface. "Probably the biggest challenge was getting a quality product rolled and up on the roof still in A-1 condition so it can be installed and look great when the job is done," Lane recalls. Even with the challenge, he had faith in his crew. "Our foreman and crew have been with us for years so I think, from a skill standpoint, our field people are unmatched. There are a few things out there we haven't seen yet, but not a lot."

Once all the panels were rolled, they were set aside so the crew could make a device to get them on the roof. What they developed



was a beam curved to the same radius as the roof panels with stirrups along the radius. The panels were loaded on the right and left of the beam so it was balanced. The loaded beam was lifted by crane to the roof. "We like to engineer things and make every job its own, fun project," Lane says. "Our guys are good problem solvers."

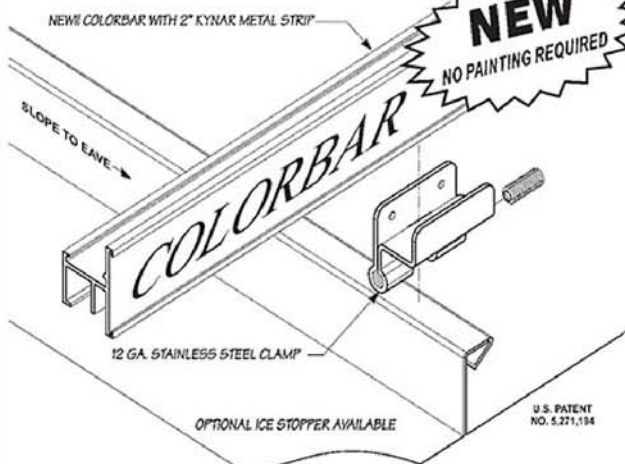
Before the panels were to be installed, a reroof framing system was installed over the existing metal roof. The rollformed metal pieces have custom divots punched out so

they can be used over any metal roof system. The framing also makes the building stronger by enhancing the existing structure.

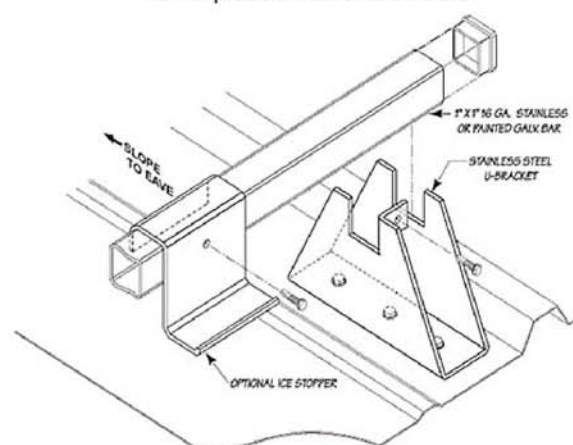
**BEAUTIFUL AND FUNCTIONAL AGAIN**

The project was finished in early summer 2008. The installation device the Commercial Siding crew made kept the panels free of dents and scratches, which was crucial for this project. "When we were done, the panels looked great and that's one of the most important

**The Best in SNOW RETENTION  
Just Got Better...**



The **NEW U-Bracket**, the best bar system for exposed fastened roofs



- SNOWBAR™ - NEW! COLORBAR USING 2" STRIP OF KYNAR
- SNOWBAR™ - STAINLESS STEEL CLAMPS FOR DURABILITY
- SNOWBAR™ - EASY TO INSTALL, BAR DROPS INTO CLAMP
- SNOWBAR™ - THREE TYPES OF CLAMPS FIT MOST SEAMS
- SNOWBAR™ - LESS LABOR INTENSIVE & NO PENETRATIONS

CALL (800) 711-9724

VISIT OUR WEBSITE AT: [WWW.SNOBAR.COM](http://WWW.SNOBAR.COM)

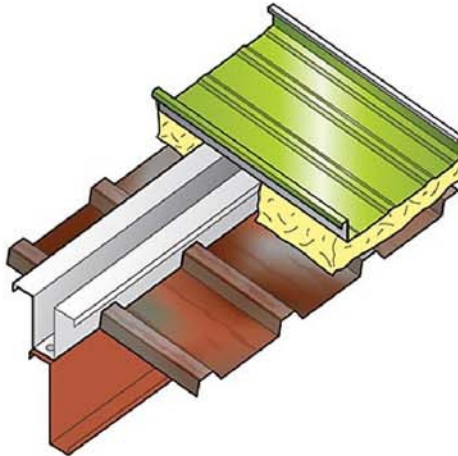




### PANEL DISCUSSION

The reroofing of the Zelma George Recreation Center in Cleveland was done by Commercial Siding, Painesville, Ohio, [www.commercialsiding.com](http://www.commercialsiding.com). The installer, a part of the 15-member, East Baton Rouge, La.-based Ultra Seam Association Inc. also rollformed the US200 standing seam panels using an Ultra Seam rollformer.

« The metal roof retrofit used a TopHat framing system from TopHat Framing Systems LLC, Painesville, [www.tophatframing.com](http://www.tophatframing.com).



Sheffield Metals International, Sheffield Village, Ohio, [www.sheffieldmetals.com](http://www.sheffieldmetals.com), supplied 60,000 square feet (5,574 m<sup>2</sup>) of 24-gauge, Galvalume-coated steel coil with a white PVDF finish.

things because it is a high-visibility project," Lane says. "It has to perform, but it also has to look great."

Unlike its predecessor, the new roof is performing well. There have been no problems at this point. Lane has taken great pride in the finished product. "It's a focal point in the neighborhood. When you drive by it looks great and it's performing well." Now the building is a match for the high-performance athletes who use it. ■

*Krista Hovis writes about architecture and metal construction from Kansas, Ohio.*



**No hands on deck.**

Minimize down time with the Simpson Strong-Tie® Quik Drive® PROPP150 auto-feed screw driving system. The tool allows you to fasten steel decking to structural steel with the speed and convenience of standing up while you work. Choose from a wide range of self-drilling screws for both steel decking and stitching applications. Unlike welding, fastening with screws doesn't require special inspection, either during or after installation. And the collated fastener strips virtually eliminate fastener waste and the need to handle loose screws, increasing productivity and reducing costs.

For a stand-up-and-drive fastening solution, visit [www.strongtie.com/quikdrive](http://www.strongtie.com/quikdrive) or call one of our Technical Sales Representatives at (800) 999-5099.



**SIMPSON**  
**Strong-Tie**



**CLEVELAND**  
THE NEW AMERICAN CITY

**FRANK G. JACKSON**  
MARTIN J. SWEENEY  
ZACHARY REED



**MAYOR**  
COUNCIL PRESIDENT  
COUNCILMAN WARD 3

---

**ZELMA W. GEORGE RECREATION CENTER  
ROOF REPLACEMENT PROJECT**

<p>MICHAEL E. COX, DIRECTOR KIM JOHNSON, COMMISSIONER JOMARIE WASIK, DIRECTOR N. KURT WIEBUSCH, COMMISSIONER</p>	<p>DEPT OF PARKS, RECREATION AND PROPERTIES DEPARTMENT OF PUBLIC SERVICE DIVISION OF ARCHITECTURE</p>
<p>DIVISION OF ARCHITECTURE COMMERCIAL SIDING &amp; MAINT. CO.</p>	<p>ARCHITECTS CONTRACTOR</p>

★ KEEP CLEVELAND CLEAN ★

